



CE

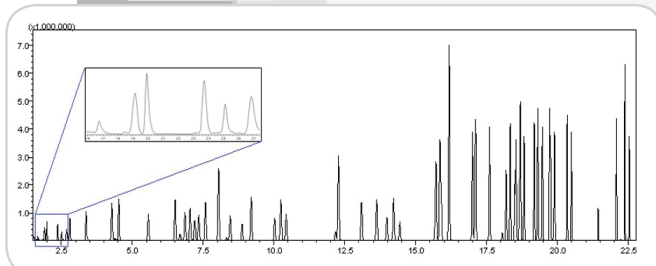
CDS 7000C PAL System Purge and Trap Plugin

● The Industries **First** Purge and Trap Concentrator
for PAL Autosamplers

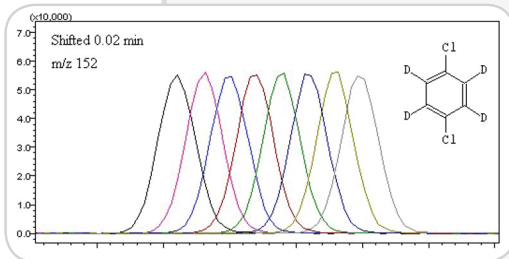
Introduction

CDS Analytical is celebrating its 50th anniversary. CDS Analytical was founded by Dr. Eugene Levy in Nottingham, PA in 1969, and moved to its state-of-the-art Oxford, PA facility in 1981. Over the past 50 years, CDS Analytical has been expanding its core business from Analytical Pyrolysis to a full range of GC Sample Introduction methods, including Thermal Desorption, Purge & Trap, and Dynamic Headspace.

CDS Analytical invented the world's first micro-processor controlled purge and trap concentrator in 1980 and won the R&D 100 award. Now the 7000C is the world's first purge and trap solution for world's leading autosampler platform - PAL RTC and RSI system.



63 EPA 8260 VOC's at 20 ppb concentration from 7000C/RTC

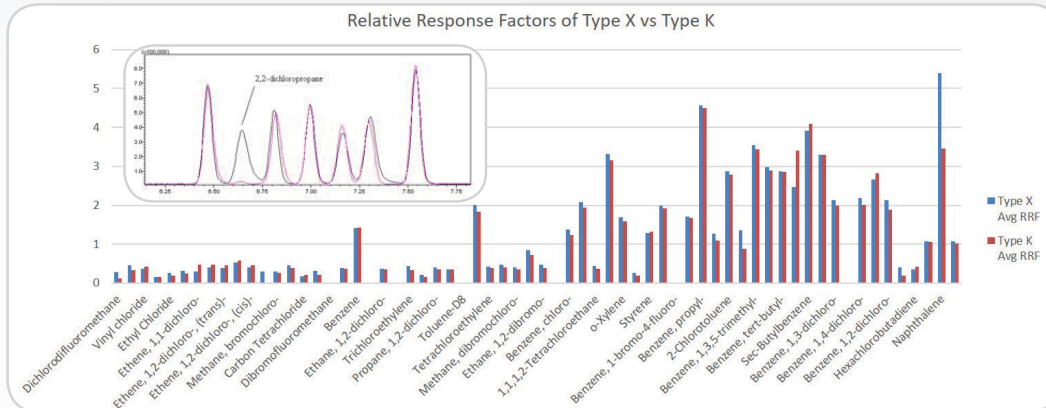


Overlap of 8X 1,4-Dichlorobenzene-d4 runs from the internal standard module. The retention time of each peak has been shifted 1.2 seconds

- TCP/IP Based System for Expandability
- Auto Prep of EPA 8260 Calibration Standard
- Max 180 Sample Position
- Exceeds the EPA 8260C Method Requirements
- < 2% RSD for Internal Standard Addition
- Proprietary X Type Trap Improves the Relative Response Factor Comparing to K Type Trap
- Online Sampling Supported
- N₂ and He Dual Channel MFC Available
- Methanol Extraction Supported

Product Specifications

- Valve oven 350°C
- Transfer Line 350°C
- Wet Trap 425°C
- Adsorbent Trap 425°C
- Trap: X Type
- Desorb pre-heat option
- Weight: 9.5 kg/21 lbs
- 18 cm W x 50 cm H x 33 cm D (7" X 19.5" X 13")



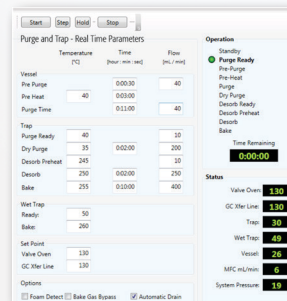
Relative Response Factor Comparison Between CDS X Type and Supelco K Type (Vocarb 3000) Trap

Product Features



Optional Internal Reference Standard module (ISTD) accurately delivers 2 μ L of internal reference standard from one of the two internal reference standard reservoirs

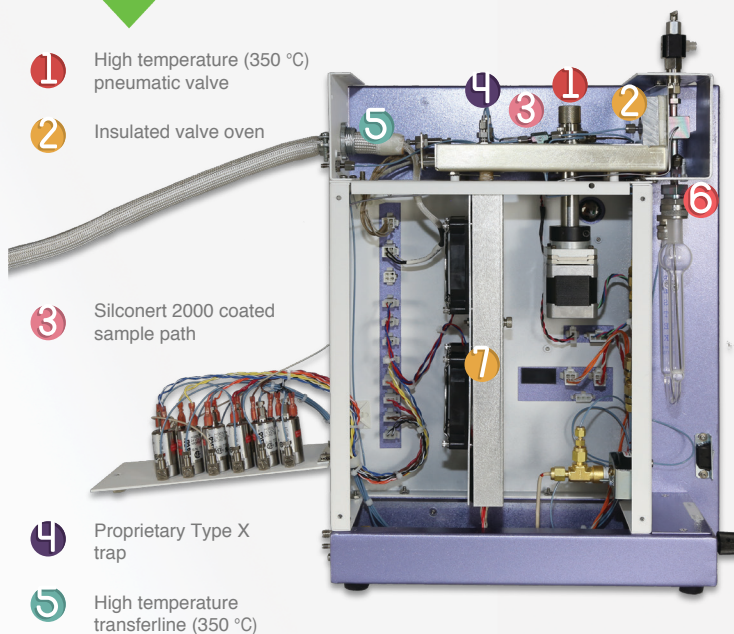
Internal Standard
< 2% RSD



User-friendly software (P&T Plugin) integrates with PSC seamlessly

180 Position or Online Sampling
40X Calibration Standard Dilution

Designed for 24/7 Run
Easy Maintenance



1 High temperature (350 °C) pneumatic valve

2 Insulated valve oven

3 Silconert 2000 coated sample path

4 Proprietary Type X trap

5 High temperature transferline (350 °C)

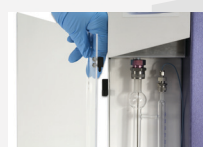
6 Foam and back-flow sensor

7 Active air-cooled trap compartment

8 Quick release sparge door



Optional Heated Sparger Vessel and Hot Water Rinse Modules



CDS Analytical's 7000C focusing trap is made of stainless steel and inert coated to remove any active site. A laser printed arrow is marked on the body to show the trap direction in installation.



Part Number	Description	Inert Coating	Size
30E2-5113	Type X	Yes	1/8" x 11 1/4"
30E2-5114	Type K (Vocarb 3000)	Yes	1/8" x 11 1/4"
30E3-5063	Tenax TA	Yes	1/8" x 11 1/4"
30E3-5069	3% SP-2100/Tenax TA	Yes	1/8" x 11 1/4"



Thermal Desorption

Pyrolysis

Purge and Trap

CDS Analytical Headquarters:

465 Limestone Road P.O. Box 277 Oxford, PA 19363-0277 Tel: 800.541.6593 610.932.3636 www.cdsanalytical.com