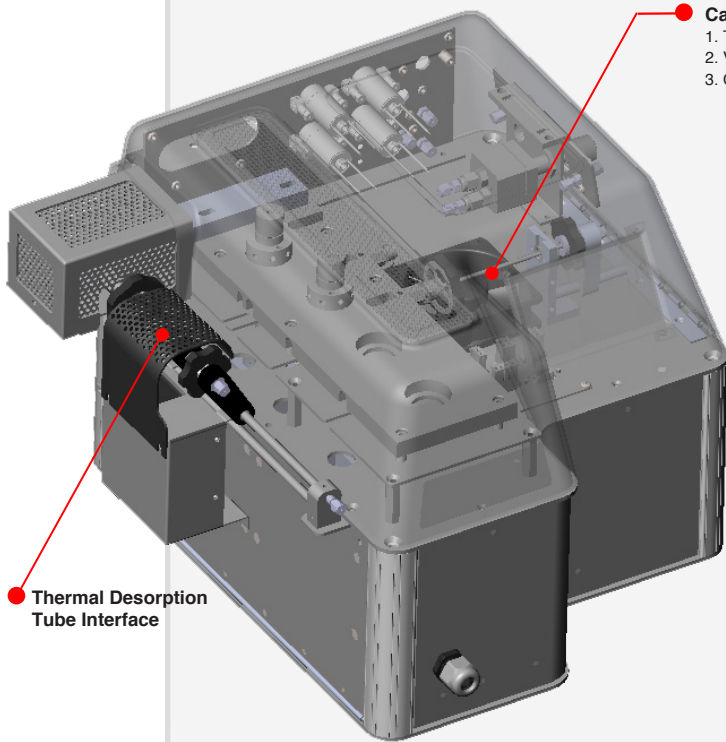


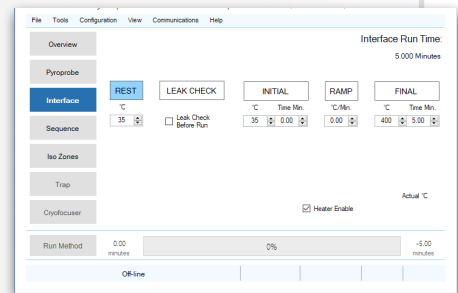
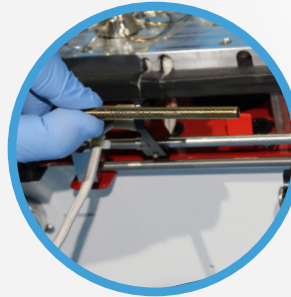
The Thermal Desorption Tube Interface converts the Pyroprobe 6200 into a thermal desorber that takes various industrial standard 1/4" OD x 3.5" L thermal desorption stainless steel tubes, and performs quantitative analysis of VVOC and VOC from C<sub>2</sub> to C<sub>44</sub> below the ppmv level.



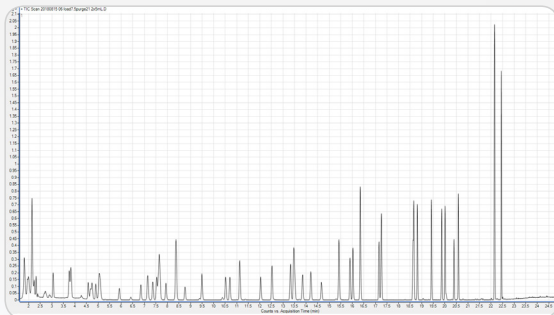
● Thermal Desorption Tube Interface

● **Capillary Focusing Trap with Pre-heat**

1. Tenax Trap (Standard)
2. Vocarb 3000 Trap (Optional)
3. Cryotrap (Optional)



Thermal Desorption Tube Interface Digital Control Interface (DCI)



68 Compounds from Propene to Naphthalene  
 TO-17 Mix at 10 ppbv  
 Trap: Vocarb 3000  
 Trap Rest: 38 °C  
 Tube Desorb: 300 °C  
 Trap Pre-heat: 15 s  
 Trap Desorb: 300 °C

**Technical Specifications:**

	Thermal Desorption Tube Interface
Max Tube Desorption Temperature	400 °C
Focusing	Pre-heat (Standard) Cryotrap (Optional)
Trap	1/8" Stainless Steel